

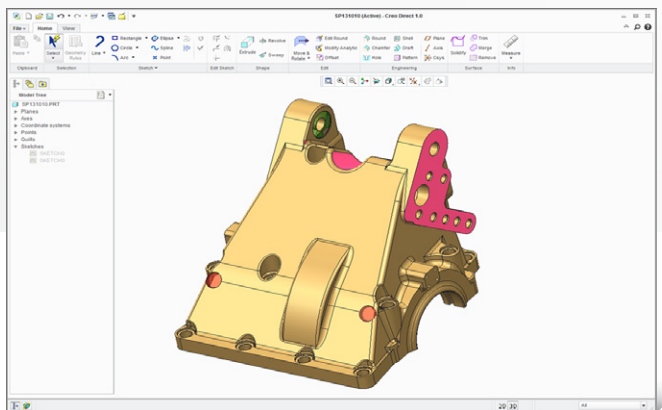
# Creo™ Direct

EASY-TO-USE, FAST, FLEXIBLE 3D DIRECT MODELING

Creo Direct is an indispensable 3D direct CAD solution because it gives you exactly what you need: an easy-to-use, fast, flexible solution that enables more people to contribute to your product development process.

Companies face many challenges when developing products, especially in a hyper-competitive, global marketplace. In addition to designing products to meet ever-changing customer requirements, product development teams are constantly pressured to deliver winning products in less time and at a lower cost.

Creo Direct gives users throughout the product development process the ability to create and edit 3D CAD data using a direct modeling approach. Whether you are at the initial stages of conceptualizing a design, gathering feedback from customers, suppliers and other partners, or trying to simplify your product geometry for CAE analyses, Creo Direct gives you the right tool to complete the task most efficiently and effectively.



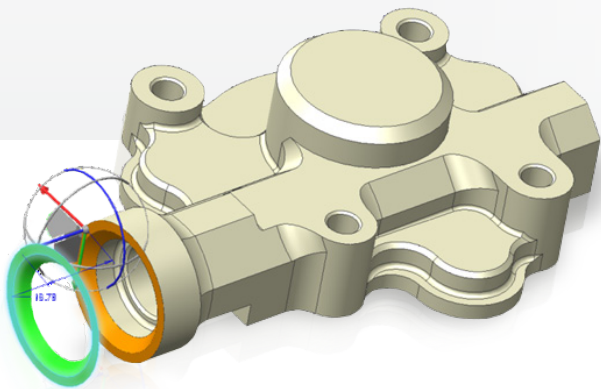
Creo Direct gives you the tools to create 3D concepts with ease.

## Key Benefits

- Easy to use and learn. The intuitive, direct modeling approach enables new or infrequent users to get up to speed quickly and create and edit 3D designs
- Faster, more flexible part and assembling modeling increases individual efficiency and productivity
- Easily accommodate late-stage changes to your engineering design faster and with less frustration with this fast and easy approach
- Work more efficiently in a multi-CAD environment by easily incorporating and editing data from other CAD systems
- Increase process efficiency
  - Streamline workflows for CAE and tooling design
  - Improve and accelerate the design review process by allowing managers, field engineers and other infrequent CAD users to edit 3D CAD data directly
  - Enable more users to leverage 3D CAD, so they can contribute to—and ultimately accelerate—the product development process

Creo Direct supports a broad range of use cases across the product development process. A few examples of tasks that are impacted and improved include:

- Enable rapid concept design and faster bid proposals. You can create, edit and iterate 3D design concepts faster with the direct modeling capabilities in Creo Direct
- Create and modify 3D geometry faster and with more flexibility, accelerating your detailed design process
- Work faster with imported data. With Creo Direct, you can edit and create new geometry on imported data so you can work faster and more efficiently in a multi-CAD environment
- Accommodate late design changes. Creo Direct gives you more flexibility when editing your 3D CAD models so you can execute changes faster and easier
- Streamline CAE workflows. Creo Direct enables analysts to simplify or edit geometries without restrictions to prepare the 3D CAD models for downstream structural and thermal simulation or other analyses, without the help of a design engineer or expert CAD user
- Changes are captured as features that can also be leveraged in design optimization studies
- Accelerate tooling design. Create tooling fixtures and jigs needed for manufacturing in less time. You can also simplify product geometry for NC and tooling design more efficiently with this fast, flexible approach
- Enable faster design reviews. Field engineers, managers and other users can capture and incorporate feedback or new product ideas directly in the 3D CAD model



Quickly move geometry using the intuitive 3D copilot.

## Features and Specifications

### 3D Solid Modeling

- Operations on sketches include extrude, revolve and sweep geometry
- Operations on edges include rounds and chamfers
- Create drafts on a surface or set of surfaces
- Create hole, shell and pattern geometry
- 3D copilot, live toolbar and other productivity-enhancing tools help you quickly manipulate and position the geometry

### Integrated 2D Sketching

- Full suite of sketching tools
- Unconstrained sketching environment
- Guides and precision panels offer tools for easy creation of 2D geometry
- Projection tool to use background 3D geometry
- Construction mode

### 3D Model Editing

- Move, attach and remove geometry
- Modify rounds and analytic features such as cylinders, cones and spheres

### 3D Surface Modeling

- Create, merge and trim quilts

### 3D Assembly Modeling

- Quickly move components and place them with snapping behavior
- Insert new components
- Activate parts and edit in the assembly context
- Delete components

### Interoperability

- Import data from neutral file formats—STEP, IGES, etc.
- Import other CAD systems, including SolidWorks® and Autodesk Inventor®

### Seamless interoperability with Creo Parametric and other Creo apps

- Provides access to extended design, analysis, manufacturing and other capabilities
- Fully retains design intent when moving between apps and modeling modes

### Language support

- English, French, German, Italian, Russian, Spanish, Korean, Japanese, Simplified and Traditional Chinese

### Platform requirements

- Microsoft® Windows® 7 and XP
- UNIX® platforms (Solaris®)

For more platform support information, visit:

[PTC.com/partners/hardware/current/support.htm](http://PTC.com/partners/hardware/current/support.htm)

### To Learn More

Visit: [PTC.com/products/creo/direct](http://PTC.com/products/creo/direct)  
or contact your local sales representative.

© 2011, Parametric Technology Corporation (PTC). All rights reserved. Information described herein is furnished for informational use only, is subject to change without notice, and should not be construed as a guarantee, commitment, condition or offer by PTC. PTC, the PTC logo, Creo, and all PTC product names and logos are trademarks or registered trademarks of PTC and/or its subsidiaries in the United States and in other countries. All other product or company names are property of their respective owners. The timing of any product release, including any features or functionality, is subject to change at PTC's discretion.

6873—Creo Direct—DS—EN—0811