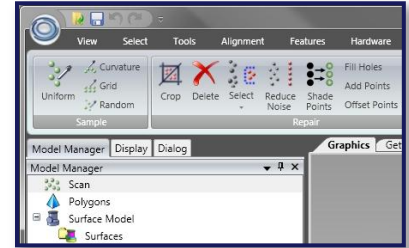


Top 5 Reasons to Buy Studio 12

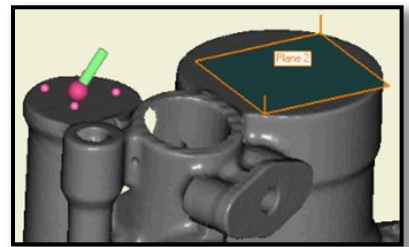
1 Unparalleled Ease of Use

With its state-of-the-art Ribbon interface, Studio is easy to learn and use. Functions are more visible and logically organized. Simple ribbon commands replace complex dialogs. Enhanced tool tips provide on the spot help in your local language. Users can customize ribbons to their particular workflows. Search tools like Command Finder help users locate the function they need.



2 Integration with Hardware and Software

With a wide array of hardware plug-ins and supported file formats for import and export, Studio is ready to transform your data into surface and solid models. Scan and probe directly into Studio to save time and maximize your hardware investment. Send fully parametric models to your CAD package to leverage the full power of 3D scan data capture.



3 Automatic Mesh Analysis & Repair

With a single click, polygon meshes are analyzed and automatically repaired to speed the process of creating clean, watertight meshes from scan data. This simple and powerful tool, called Mesh Doctor, allows even the novice user to bypass the tedious, manual clean-up steps so often necessary in reverse engineering of large, complex data sets.



4 One-Button Surface Creation

In a matter of minutes, complex scan data is turned into watertight NURBS surfaces, ready for export as IGES or STEP. Creating accurate digital copies of physical forms is simple, with little need for special training or experience. Perfect for digital archiving, analysis and engineering, the AutoSurface feature saves time and effort, putting the emphasis on ease-of-use and accuracy.



5 Create Parametric Models

With its ability to capture design intent from any shape, Studio is the perfect tool for creating parametric models from scan data. The simple process allows the user to correct flaws in the actual object, and create perfect surface or solid representations of the scan. By directly integrating with all leading mechanical CAD packages, Studio is the most powerful reverse engineering tool on the market.

